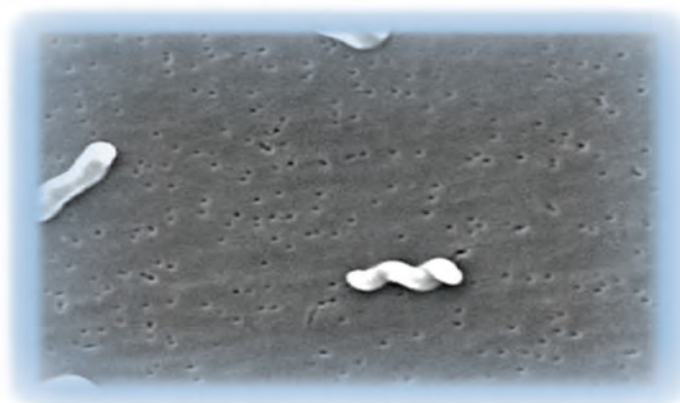


Campylobacter jejuni is a leading cause of bacterial diarrhea, known as Campylobacteriosis, in the United States. It is estimated that the number of cases exceed the number of cases of salmonellosis (2 to 4 million/year).¹ This gram negative bacteria is found in raw chicken, raw milk and non-chlorinated water.

Besides diarrhea, symptoms include fever, abdominal pain, nausea, headache and muscle pain. Illness occurs 2 to 5 days after ingestion and typical duration is 7 to 10 days. Most infections are self-limiting and do not require treatment with antibiotics. Long-term consequences do occur, however they are rare. The infective dose is believed to be very small, 400 to 500 bacteria. People at greater risk include:

- young children
- the elderly
- Pregnant women
- people with weakened immune systems.

Methods of diagnosis include stool culture, antibody and antigen quantitative and qualitative immunoassays and Rapid tests.



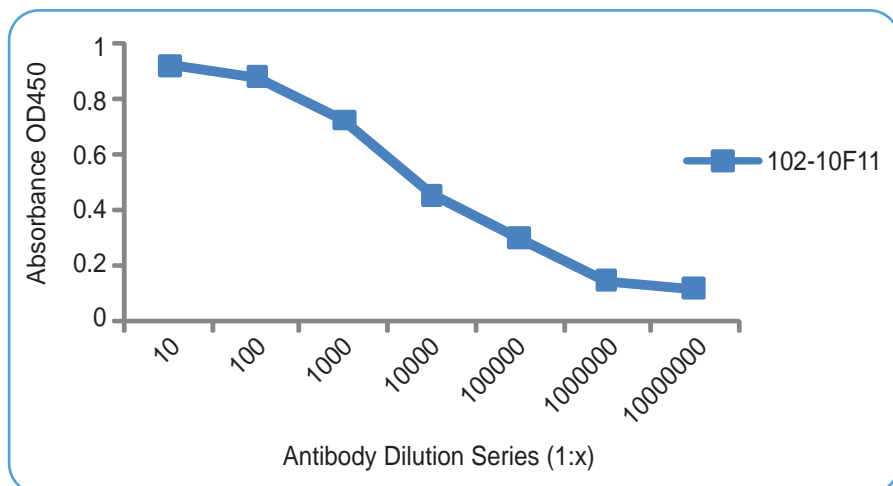
Scanning electron micrograph depicting *C. jejuni*

C. jejuni is a slender, curved and motile rod that is microaerophilic (reduced requirement for oxygen). It is fragile and sensitive to environmental stress such as heat from cooking, pasteurization or chlorination. This bacteria varies in width from 0.2 to 0.9 micron and varies in length from 0.5 to 5.0 micron. It exhibits rapid, darting motility in corkscrew fashion using a single flagellum or 2 flagella and it possesses a lipopolysaccharide endotoxin.²

¹ <http://www.fda.gov/Food/FoodSafety/FoodborneIllness/FoodborneIllnessFoodbornePathogensNaturalToxins/BadBugBook/ucm070024.htm>

² <http://emedicine.medscape.com/article/970552-overview>

Meridian Life Science, Inc. offers a variety of Monoclonal Antibodies (MAbs) to *C. jejuni*. Most have been tested in ELISA and/or Western Blot. The following is the titration curve of C66700M (Clone # 102-10F11) in indirect ELISA:



Antigen: *Campylobacter jejuni* ATCC #29428, coated at approx. 106 bacteria per well.

Antibody: Dilution series of C66700M, incubated 1 hour at room temperature followed by Goat anti Mouse IgG:HRP conjugate and TMB substrate.

Antigen

Catalog #	Specificity	Source	Format	Unit	Clone #	Isotype	Tested Applications
R14900	<i>Campylobacter jejuni</i>	C. jejuni Culture	Purified	1mg			

Monoclonal Antibodies

Catalog #	Specificity	Source	Format	Unit	Clone #	Isotype	Tested Applications
C65727M	<i>Campylobacter jejuni</i>	Mouse	Purified	100ug	BDI727	IgG1	EIA,WB
C65717M	<i>Campylobacter jejuni</i>	Mouse	Purified	100ug	BDI717	IgG1	EIA,WB
C86082M	<i>Campylobacter jejuni</i>	Mouse	Purified	1mg	B082M	IgG1	EIA,WB
C86083M	<i>Campylobacter jejuni</i>	Mouse	Purified	1mg	B083M	IgG2b	EIA,WB
C86326M	<i>Campylobacter jejuni</i>	Mouse	Purified	1mg	B140M	IgG2b	EIA,WB
C66700M	<i>Campylobacter jejuni</i>	Mouse	Purified	1mg	102-10F11	IgG2b	EIA
C01614M	<i>Campylobacter jejuni</i>	Mouse	Dil.Sup.	1ml	57-24	IgG3	
C01482M	<i>Campylobacter jejuni</i> Types 1 and 2, non-flagellar	Mouse	Purified	1mg	B617M	IgM	EIA,IFA

Polyclonal Antibody

Catalog #	Specificity	Source	Format	Unit	Clone #	Isotype	Tested Applications
G5V04-500	<i>Campylobacter jejuni</i>	Goat	Aff. Pur.	0.5mg			EIA

Quality and Commitment:

- FDA registered facility
- QSR, Quality System Regulation Documentation
- Committed to total customer satisfaction

For Research or Further Manufacturing Use Only. Not for Use in Diagnostic Procedures.

ISO 9001:2008 Certified and EC 1774/2002 Approved Facility



ME-CAMPY 04/26/11