

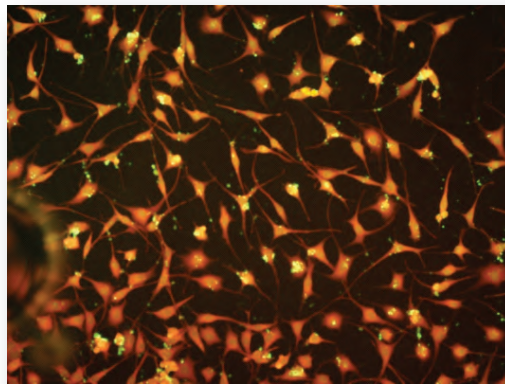
MONOCLONAL ANTIBODIES TO CHLAMYDIA

Chlamydia trachomatis (*Chlamydia*) is a human pathogen that is commonly transmitted sexually. If left untreated in women, it may result in pelvic inflammatory disease, infertility and potentially fatal ectopic pregnancy. Complications in men, although rare, may also result in infertility. *Chlamydia* infections of the eye are a leading cause of blindness worldwide.

Chlamydophila psittaci (*C. psittaci*) is a bacteria that infects birds and mammals including humans. It is transmitted by inhalation, contact or ingestion and can result in life-threatening pneumonia.

MAbs to Chlamydia

	Catalog # C66435M	Catalog # C66436M
Description	MAB to <i>Chlamydia trachomatis</i>	MAB to <i>Chlamydia</i>
Specificity	Reacts with a major surface protein of <i>Chlamydia trachomatis</i>	Reacts with a glycolipid antigen on <i>Chlamydia trachomatis</i> and <i>Chlamydophila psittaci</i>
Clone	K14.67	A21.65



Fluorescent photomicrograph of McCoy cells infected with *C. trachomatis* I strain using a fluorescently labelled mixture of the two monoclonals C66435M and C66436M

The picture shows intracellular inclusions as well as elementary bodies released from the infected cells.

Quality and Commitment:

- FDA registered facility
- QSR, Quality System Regulation Documentation
- Committed to total customer satisfaction
ISO 9001:2008

SPECIFICATION INFORMATION

Catalog #:	C66435M	C66436M
Description:	MAb to <i>Chlamydia trachomatis</i>	MAb to <i>Chlamydia</i>
Specificity:	Reacts with major surface protein of <i>Chlamydia trachomatis</i>	Reacts with glycolipid antigen <i>Chlamydia trachomatis</i> and <i>Chlamydia psittaci</i>
Clone:	K14.67	A21.65
Host Animal:	Mouse	Mouse
Isotype:	IgG ₃ , kappa	IgG ₃ , kappa
Source:	Purified, Liquid	Purified, Liquid
Format:	>90% pure (SDS-PAGE) Protein A chromatography Product is 0.2um filtered	>90% pure (SDS-PAGE) Protein A chromatography Product is 0.2um filtered
Purification:	Lot specific (OD280nm, E ^{0.1%} = 1.4)	Lot specific (OD280nm, E ^{0.1%} = 1.4)
Buffer:	10mM Sodium phosphate 150mM Sodium chloride, pH 7.4	10mM Sodium phosphate 150mM Sodium chloride, pH 7.4
Preservative:	0.05% Sodium Azide	0.05% Sodium Azide
Applications:	Suitable for use in IFA and IHC (paraffin sections). Each laboratory should determine an optimum working titer for use in its articular application. Other applications have not been tested but use in such assays should not necessarily be excluded.	
Storage:	Upon receipt, store at -40°C. Avoid multiple freeze/thaw cycles.	
Warning:	This product contains sodium azide, which has been classified as Xn (Harmful), in European Directive 67/548/EEC in the concentration range of 0.1-1.0%. When disposing of this reagent through lead or copper plumbing, flush with copious volumes of water to prevent azide build-up in drains.	

For Research or Further Manufacturing Use Only.
Not for Use in Diagnostic Procedures.

ME-CHLAMIDIA 08/19/10

For more information contact:
60 Industrial Park Road • Saco, ME USA 04072
888.530.0140 • 207.283.6500
Fax: 207.283.4800
E-mail: info@meridianlifescience.com

ISO 9001:2008 Certified and EC1774/2002 Approved Facility.

WWW.MERIDIANLIFESCIENCE.COM

Meridian
Life Science, Inc.
Innovative Solutions. Trusted Partner.®