

# TOXOPLASMA ANTIGEN

Toxoplasmosis is of clinical importance due to the person-to-person transmission of *Toxoplasma* by blood transfusions and tissue transplantation. Since recipients of transplantations are generally immunocompromised, introduction of *T. gondii* can result in severe and fatal infections. Primary infection during the first trimester of pregnancy can have devastating effects on the fetus. Normal deliveries have been shown to be common when infection is acquired during the third trimester. However, if left untreated, this group may develop major symptoms months or years later.<sup>1</sup>

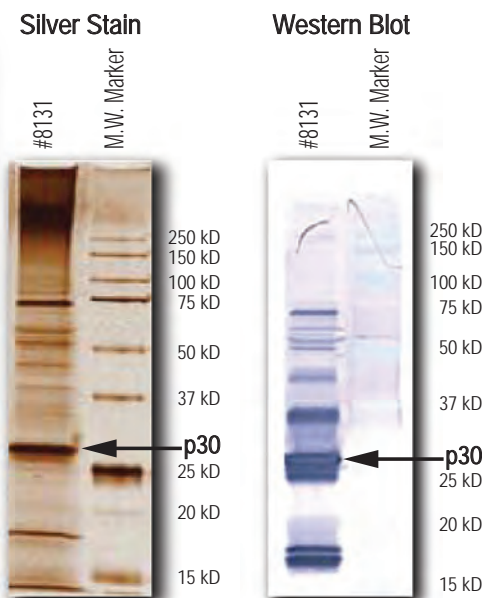
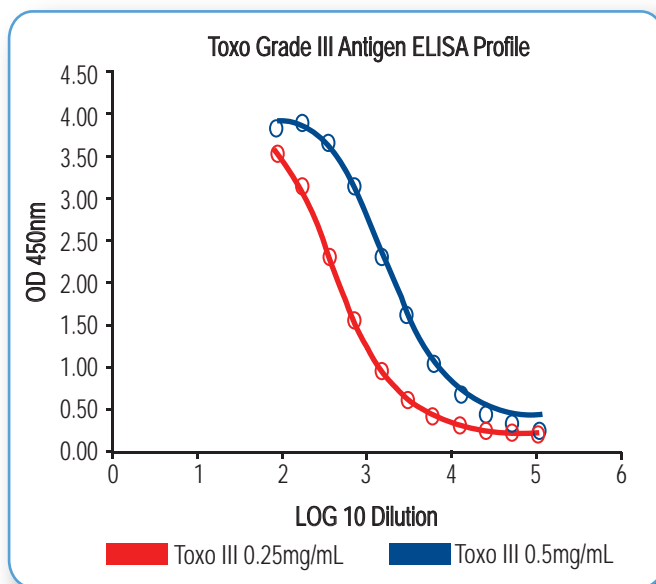
## TOXOPLASMA GRADE III ANTIGEN:

Toxoplasma Grade III Antigen (#8131) is produced by isolation of the tachyzoite membrane followed by a detergent extraction. Toxo III Antigen consists predominantly of p30 antigen; however, other membrane antigens are present. Toxo III Antigen has greater purity and is enriched for the surface antigens, in particular SAG1 (p30).

- Product: Toxoplasma Grade III Antigen Part #8131
- Strain: RH
- Propagation: HeLa Cells
- Protein/Purity: 0.5mg/mL approximately 90% *T. gondii* tachyzoite proteins
- Supplied in: 0.1M Phosphate, 0.15M NaCl, 0.01M EDTA, 0.1% SDS
- Storage and Shipping:  $\leq -65^{\circ}\text{C}$ , shipped on Dry Ice

## BENEFITS OF TOXO III ANTIGEN:

- Enriched for surface proteins including but not limited to p30 (SAG1) *T. gondii* specific antigen
- Exhibits strong IgG and IgM Immunoreactivity
- Higher purity
- Reduced background



<sup>1</sup> Manual of Clinical Microbiology, 5<sup>th</sup> edition, American Society for Microbiology, 1991.

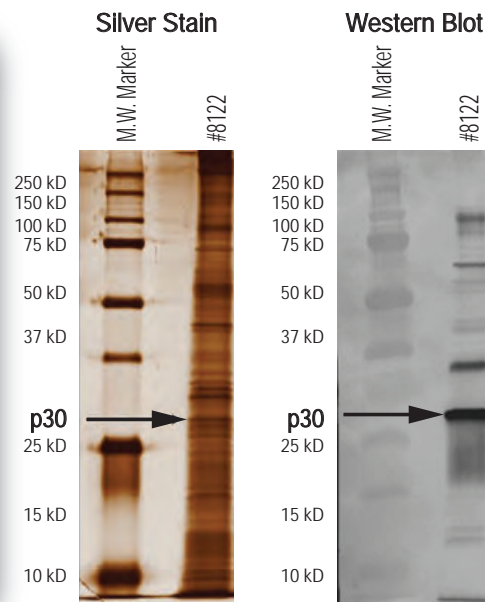
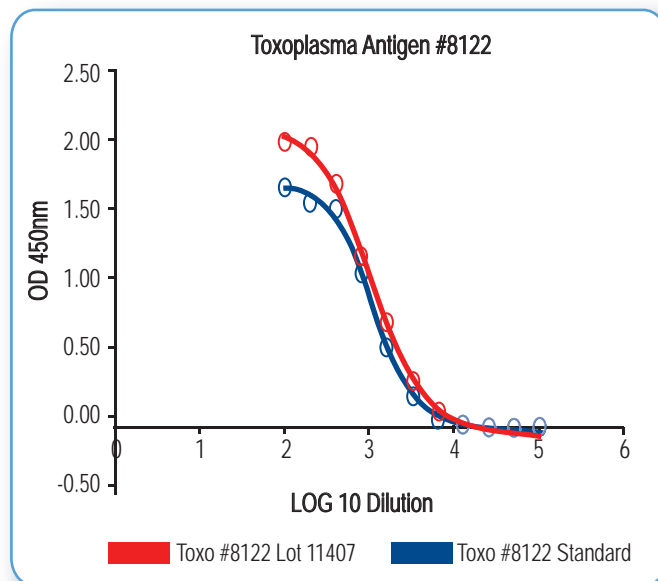
# TOXOPLASMA ANTIGEN

Toxoplasmosis with central nervous system (CNS) involvement is one of the leading causes of death in AIDS patients. The measurement of IgM antibodies is critical to the serological diagnosis of toxoplasmosis. The differentiation of acute versus chronic infection can often be determined by the presence of IgM antibody, or passively transferred antibody from the mother to the fetus can be ruled out by the presence of IgM antibody. Indication of recent acquisition of infection may be made by the level of IgM antibody present.

## TOXOPLASMA ANTIGEN:

Toxoplasma Antigen (#8122) is a partially purified lysate. The *T. gondii* tachyzoite antigen lysate is prepared by extraction of soluble antigens from tachyzoites grown in HeLa cells.

- Product: Toxoplasma Antigen Part #8122
- Strain: RH
- Propagation: HeLa Cells
- Protein: 1.0 mg/mL by BCA
- Purity: Approximately 60% Tachyzoite Proteins
- Supplied in: 0.1M Phosphate, 0.15M NaCl, pH 7.3-7.7
- Storage and Shipping:  $\leq -65^{\circ}\text{C}$ , shipped on Dry Ice



VA-TOX 06/24/10

For more information contact:  
5171 Wilfong Road • Memphis, TN USA 38134  
888.530.0140 • 207.283.6500  
Fax: 207.283.4800  
E-mail: [info@meridianlifescience.com](mailto:info@meridianlifescience.com)

ISO 9001:2008 Certified and EC 1774/2002 Approved Facility

[WWW.MERIDIANLIFESCIENCE.COM](http://WWW.MERIDIANLIFESCIENCE.COM)

 **Meridian**  
Life Science, Inc.  
Innovative Solutions. Proven Partner.®